



 **MODÜL
ÇELİK
YAPI**

 **MODÜL
ÇELİK
YAPI** 

MODUL STEEL CONSTRUCTION
2009



Modül Çelik Yapı'nın faaliyet gösterdiği sektörler arasında endüstriyel tesisler, köprü yapıları, petrokimya, rafineri ve enerji tesisleri ile tekstil tesisleri, çok katlı binalar, ticaret ve alışveriş merkezleri ön sırayı almaktadır. Bunların yanı sıra yüksek fırınlar, petrol rafineri fırınları, saç işleme fırınları, silindirik tanklar ve ekipmanların imalatı gibi muhtelif alanlarda özel imalatlar vardır.

Modül Çelik Yapı Avrupa, Asya, Afrika ve Arap ülkelerinin yanı sıra, Ukrayna ve Rus Cumhuriyetlerinde gerçekleştirdiği projeleri ile uluslar arası alanda öncelikle tercih edilen bir Türk firması olmayı başarmıştır.

Modül Çelik Yapı, 550 kişilik kadrosu, 52.000 m2 fabrika sahası ile bugüne kadar yerli ve yabancı, farklı birçok sektördeki projeyi başarı ile tamamlamıştır. 2009 yılıbaşı itibarıyla biten yatırımları sonucunda 2.500 Ton/Ay imalat kapasitesine ulaşmıştır.

Modül Çelik Yapı, imalatta kullandığı CNC, NC ve otomatik kontrollü imalat tezgâhlarıyla insan hatasından kaynaklanan kusurları gidermiştir. Ayrıca imalata destek verilmesi amacıyla bilgisayar destekli CAD, CAM olanaklarından maksimum düzeyde faydalanan bir proje grubu oluşturmuştur.

Modül Çelik Yapı, Dünya standartlarına uygun bir imalat kalitesine ulaşabilmek amacıyla, TS EN ISO 9001-2000 Kalite Yönetim Sistemi, DIN.18800-7:2000 (CLASS E) İmalatçı Kalifikasyonu, EN.729 Kaynak İşlemi Kalite Kalifikasyonu, TUSCAMARK Türk Yapısal Çelik Demeği Sertifikası, ISO 14001:2004 Çevre Yönetim Sistem Sertifikası, OHSAS 18801:2007 İşçi Sağlığı ve İş Güvenliği Sertifikası prensiplerini uygulamaktadır.

Modül Çelik Yapı'nın kullandığı kaynak yöntemleri ile ilgili NDT testleri, ASNT-LEVEL I ve ASNT-LEVEL II belgesine sahip uzman elemanlar tarafından yapılmaktadır. Fabrika bünyesinde kurulmuş olan modern kumlama ve boya tesislerinde imalatı tamamlanan malzemelere uzun süreli korozyon direnci ve estetik görünüş kazandırılmaktadır.

Modül Çelik Yapı bu çalışma prensipleri ile sektöründe elde etmiş olduğu ihracat liderliğini çok daha ileri noktalara taşımak üzere çalışmalarına devam etmektedir.



Among the leading sectors that Modül Steel Construction shows activity are industrial facilities, bridge structures, petrochemical, refinery, energy plants, textile establishments, multistory buildings, trade and shopping centers. In addition, we have such special fabrications as high temp heaters, petroleum refinery heaters, plate processing heaters, cylindrical tanks and material fabrication in various fields.

Modül Steel Construction has become the preferred Turkish firm in the international area with the projects carried out in Europe, Ukraine, Russian Republics and Asia, Africa and Arab countries.

With its capacity of 550 staff and facility scope of 52.000 sqm; Modül Steel Construction accomplished a lot of local and foreign projects successfully so far. Our fabrication capacity has reached 2.500 Ton / month in consequence of the investments ended by the beginning of 2009. The defects resulted from human were removed with CNC, NC and automatic controlled manufacturing benches; besides, a Project group taking the maximum advantage of computer-assisted CAD-CAM facilities was organized in order to give support to manufacturing.

Modül Steel Construction in order to reach the production quality in accordance with the world standards, carries out the principles of the TSE EN ISO 9001-2000 Quality Management System, DIN 18899-7:2000 (Class E) Manufacturer Qualification, EN. 729 Qualification of Welding Process Quality, TUSCAMARK Certificate of Turkish Structural Steel Association, ISO 14001:2004 Certificate of Environmental Management System, OHSAS 18801:2007 Certificate of Occupational Health and Safety Management.

NDT Tests related to the welding procedures being applied by Modül Steel Construction are carried out by the qualified personnel having ASNT Level. I Certificate and ASNT Level. II Certificate. With the operations carried out in the modern facilities of sand blasting and painting that were built within the body of factory, the materials of which manufacturing was completed, gain a long-term corrosion strength and aesthetic appearance.


İÇİNDEKİLER

4-13	Köprüler
14-45	Endüstriyel Tesisler
46-53	Alışveriş & Ticaret Merkezleri
54-69	Çelik Konstrüksiyon Binalar
70-75	Yapısal Çelik Konstrüksiyonlar
76-83	Çelik Yapı Üretim Tesisi
84-85	Sertifikalar
86-87	Referans Listesi

INDEX

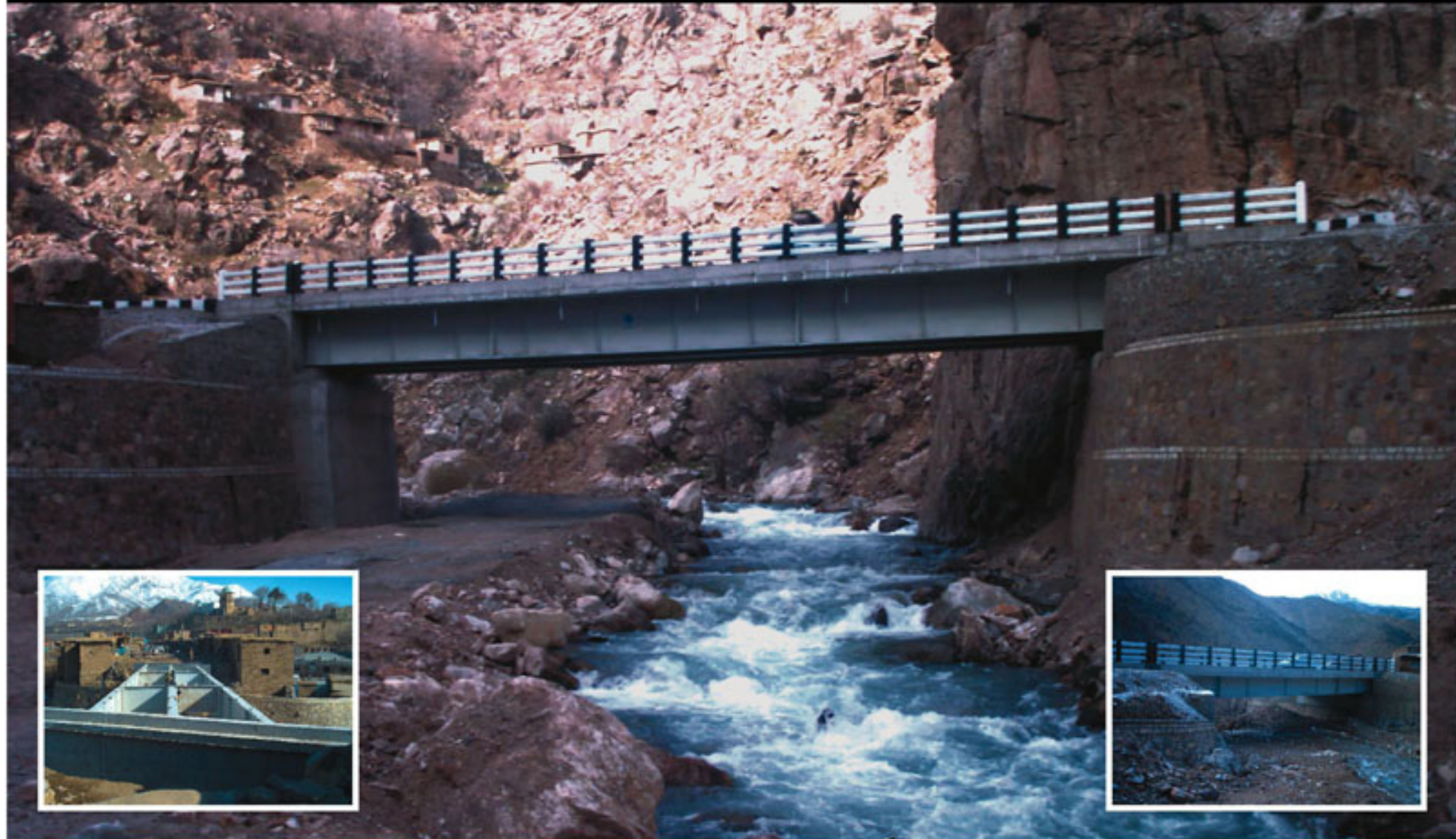
Bridges	4-13
Industrial Plants	14-45
Shopping & Trade Center	46-53
Steel Construction Buildings	54-69
Structural Steel Constructions	70-75
Steel Structure Production Plants	76-83
Certificate	84-85
Reference List	86-87



 **Dnieper River**
Highway Crossing and Railway Bridge
Otoyol ve Demiryolu Köprüsü



Region: Kiev - Ukraine
Client: Remeks
Construction Year: 2008
The Construction is still ongoing



Afghanistan
Highway Trestle Beams
Otoyol Viyadük Kirişleri



Region: **Afghanistan**
Client: **Entes**
Construction Year: **2005**



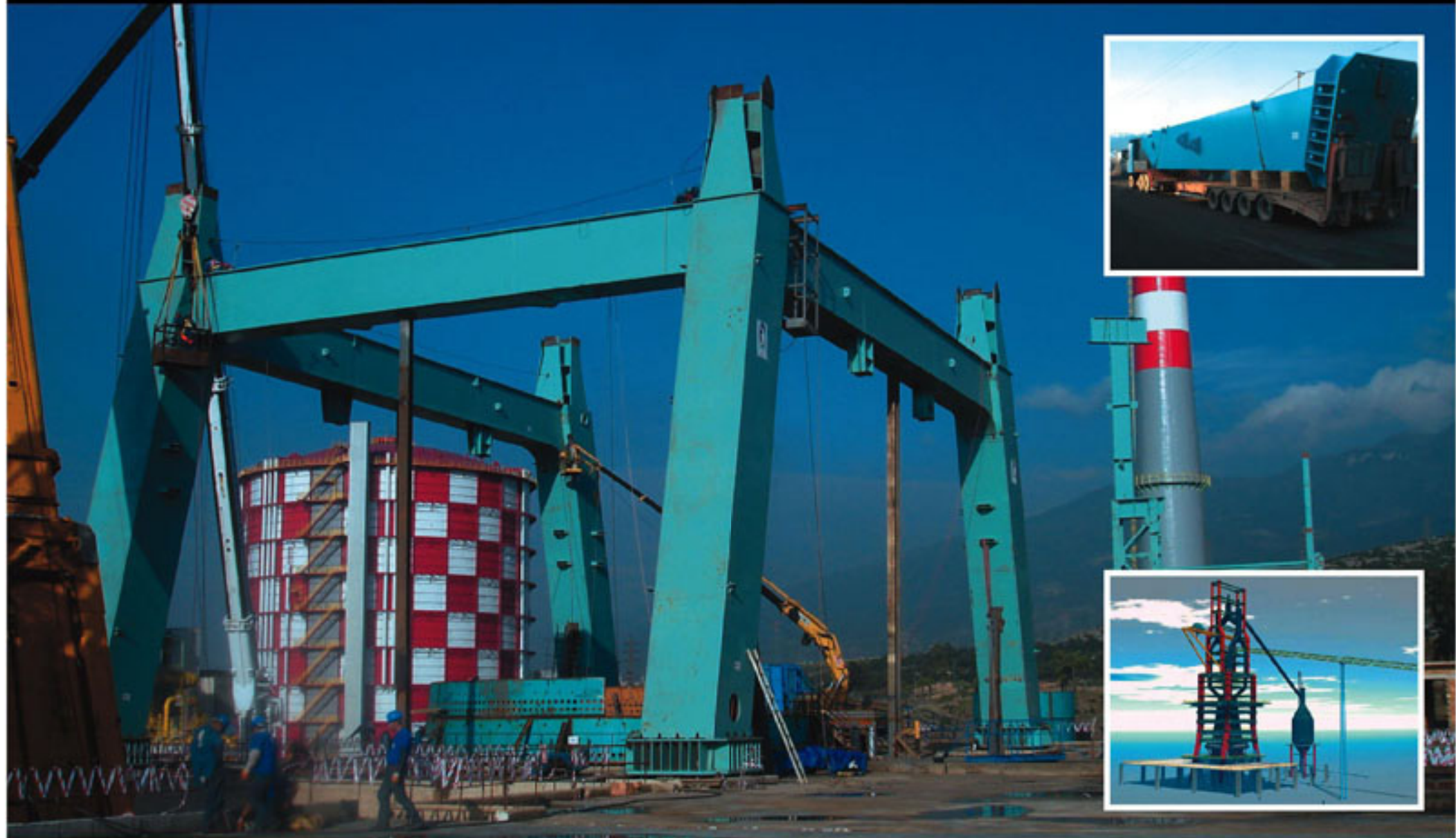
E-5 Highway Zeytinburnu
Metro Trestle Beams
Metro Viyadük Kirişleri

Region: İstanbul - Türkiye
Client: Yapı Merkezi
Construction Year: 2005



Uphill Court
Tower Crossing Bridge
Kule Geçiş Köprüsü

Region: İstanbul - Türkiye
Client: Varyap
Construction Year: 2008



Isdemir
No.4 High Temp Heater
4 Nolu Yüksek Fırın

Region: **Iskenderun - Hatay - Türkiye**

Client: **Isdemir - Erenco**

Construction Year: **2008**

The Construction is still on-going



Tüpraş
Diesel Fuel and CCR Plant
Dizel Yakıt ve CCR Ünitesi

Region: Kocaeli - Türkiye
Client: Alarko
Construction Year: 2006



Arzew
Natural Gas Turbine Power Plant
Doğalgaz Santrali Türbin Binası



Region: **Algeria**
Client: **Alarco**
Construction Year: **2003**



Rabigh
Petrol Refinery Heaters
Petrol Rafineri Fırınları



Region: Saudi Arabia
Client: Tecnicas Reunidas
Construction Year: 2007



Maritza
Natural Gas Turbine Power Plant
Doğalgaz Santrali Türbin Binası



Region: Bulgaria
Client: TGO
Construction Year: 2007



Cepsa
Petrol Refinery Heaters
Petrol Rafineri Fırınları



Region: **Spain**
Client: **Tecinas Reunidas**
Construction Year: **2008**



 **Isdemir**
Coal Grouting Plant
Kömür Enjeksiyon Tesisi

Region: İskenderun - Hatay - Türkiye
Client: Isdemir - Erenco
Construction Year: 2007





Tezcan
Galvanized Sheet Fabrication Plant
Galvaniz Sac Üretim Tesisi

Region: Kocaeli - Türkiye
Client: Tezcan
Construction Year: 2005



Tezcan
Sheet Rolling Plant
Sac Haddehane Tesisi

Region: Kocaeli - Türkiye
Client: Tezcan
Construction Year: 2005



Hyundai Automobile
Factory Press Halls
Fabrikası Pres Holleri

Region: Kocaeli - Türkiye
Client: Alarko - Evren
Construction Year: 2003





VBG Shipyard
Ship Fabrication Halls
Gemi Üretim Holleri

Region: **Yalova - Türkiye**
Client: **VBG Holding**
Construction Year: **2008**



Voest Alpine
Galvanized Coating Plants Heaters
Galvaniz Kaplama Ünitesi Fırınları



Region: Austria
Client: Andritz Selas
Construction Year: 2008



Folkestone
Integrated Textile Factory
Entegre Tekstil Fabrikası

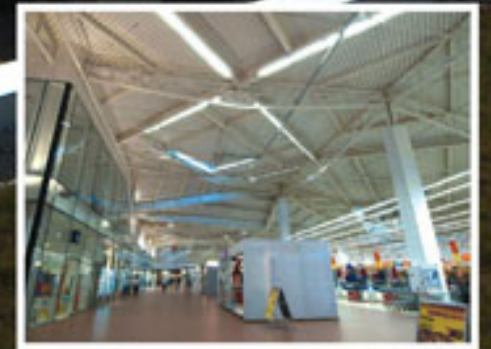


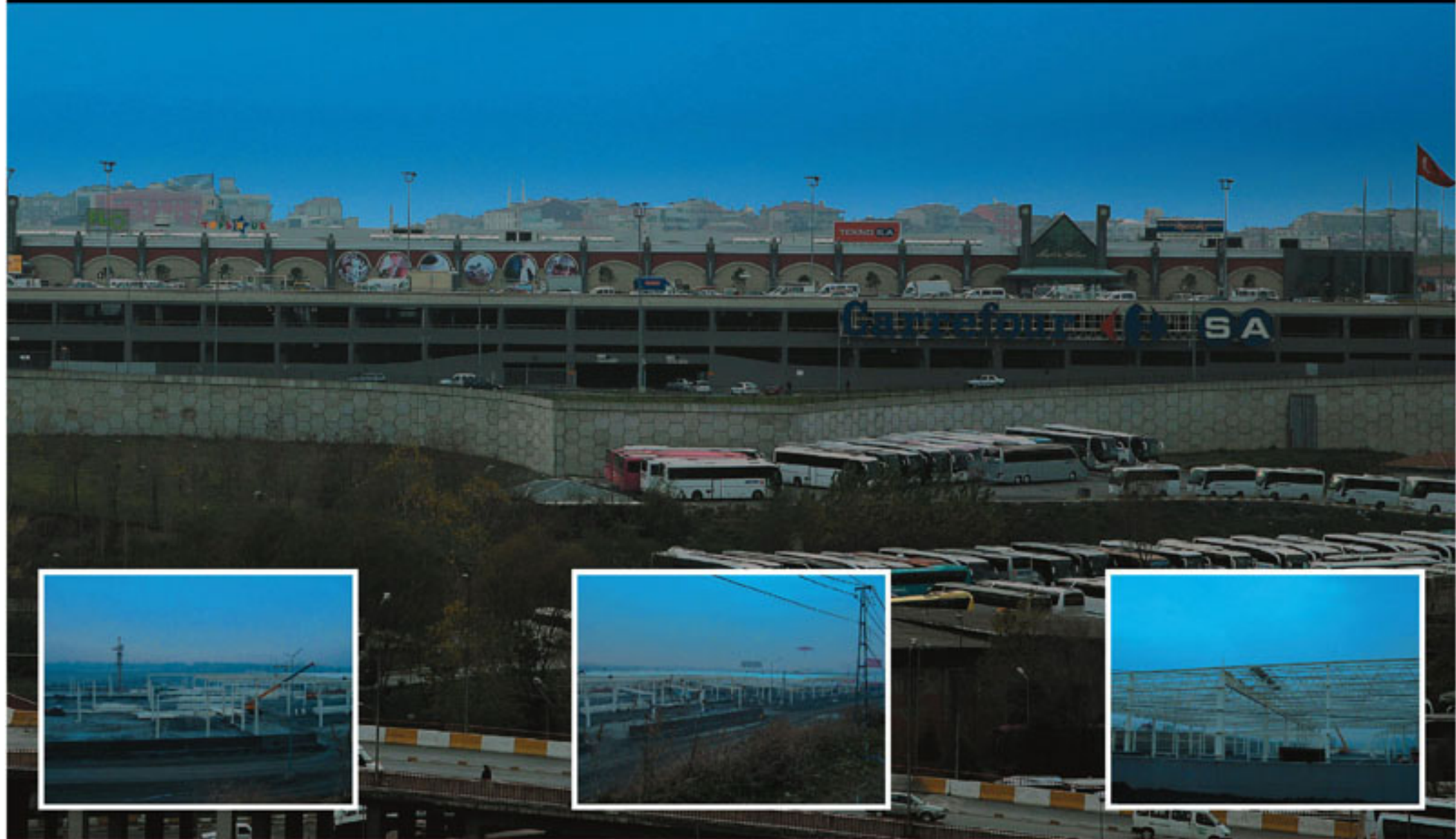
Region: Türkmenistan
Client: Zorlu - Boğaziçi
Construction Year: 2005



Federal Mogul
Izmit Production Plant
Izmit Üretim Tesisi

Region: Kocaeli - Türkiye
Client: Federal Mogul
Construction Year: 2003





CarrefourSA Bayrampaşa
Hypermarket and Trade Center
Hipermarket ve Ticaret Merkezi

Region: İstanbul - Türkiye
Client: CarrefourSA - ERA
Construction Year: 2004







Kocaeli University
Medical Faculty
Tıp Fakültesi

Region: Kocaeli - Türkiye
Client: Gürış
Construction Year: 2004



Cetin Metal
Sheet Processing Plants
Sac İşleme Tesisi

Region: **Gebze - Türkiye**
Client: **Çetin Metal**
Construction Year: **2008**







Mecaplast
Automotive Supply Industry Plants
Otomotiv Üretim Tesisleri

Region: Gebze - Türkiye
Client: Meca Plast
Construction Year: 2004



Marmara Isıl İşlem
Production Plants
Üretim Tesisleri

Region: İstanbul - Türkiye
Client: Marmara Isıl İşlem
Construction Year: 2004



Beko
Electronic Production Plants
Elektronik Üretim Tesisleri

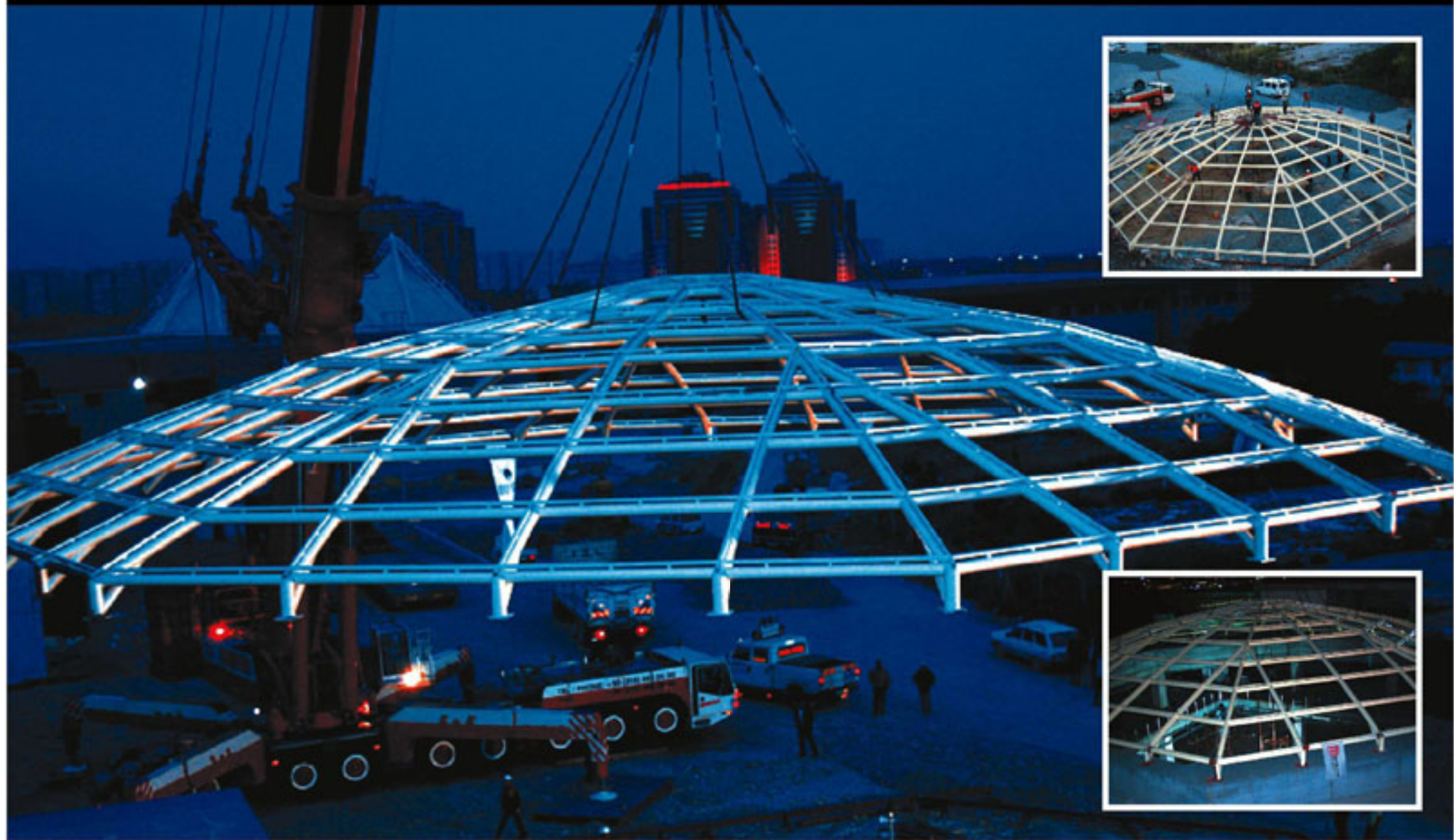
Region: İstanbul - Türkiye
Client: Ark İnşaat
Construction Year: 2006



Istanbul Technical University (ITU)
Orhan Öcalgiray Research Institute
Orhan Öcalgiray Araştırma Enstitüsü

Region: İstanbul - Türkiye
Client: İTÜ Vakfı
Construction Year: 2004





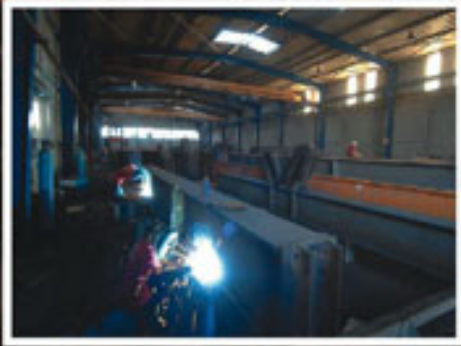
CNR
World Trade Center
Dünya Ticaret Merkezi

Region: **Istanbul - Türkiye**
Client: **Evren İnşaat**
Construction Year: **2005**



Beşiktaş İnönü Stadium
Cased Turbine Steel Structure
Kapalı Trübin Çelik Yapısı

Region: **İstanbul - Türkiye**
Client: **BJK Kulübü**
Construction Year: **2006**



Modül Steel Construction
Paint Shop
Boya Atölyesi



Modül Steel Construction
Built-up Halls
Çatma Holleri

STEEL STRUCTURE PRODUCTION PLANT

81



Modül Steel Construction
Prefabrication and Machine Halls
On İmalat ve Makina Holleri



Modül Steel Construction
Prefabrication and Machine Halls
On İmalat ve Makina Holleri

REFERENCE LIST

NO	CLIENT	TITLE OF WORK	REGION	DESIGN BRIDGE TYPE	CONSTRUCTION METHOD	TYPE OF WORK	TONNAGE	YEAR	
1	MIG	SHIPYARD BUILDING	YALOVA	X	X	X	INDUSTRIAL PLANT	2450	2008
2	PULVER-KOFA	PULVER-KOFA	KOCALI	X	X	X	INDUSTRIAL PLANT	850	2008
3	ORA	SHOPPING & TRADE CENTER	ISTANBUL	X	X	X	SHOPPING & TRADE CENTER	750	2008
4	TEZCAN	TEZCAN - TEKSTIL	KOCALI	X	X	X	INDUSTRIAL PLANT	750	2008
5	ODL	ODL PHARMACEUTICAL PLANT	ISTANBUL	X	X	X	INDUSTRIAL PLANT	650	2008
6	TS	TS - SPAN	SPAIN	X	X	X	INDUSTRIAL PLANT	375	2008
7	SELAS	SELAS - HEATERS	AUSTRIA	X	X	X	INDUSTRIAL PLANT	250	2008
8	ALTYALDIZ	ALTYALDIZ - COKE	SALDUSKIA	X	X	X	STEEL CONST. BUILDING	220	2008
9	AKOVA	AKOVA - APOZ BUILDING	KOCALI	X	X	X	STEEL CONST. BUILDING	150	2008
10	TURKIZ	TURKIZ - ROOF	KOCALI	X	X	X	STEEL CONST. BUILDING	120	2008
11	BEYKES	BEYKES RUBER HOUSING AND RUBBER BRIDGE	ISTANBUL	X	X	X	BRIDGE	16.500	2007
12	BERKO	BERKO - (NO4) HIGH TEMP HEATER	SKANDERUN	X	X	X	INDUSTRIAL PLANT	11.500	2007
13	FOKISTONE	AKRAMIO BOTTLE FABRICATION PLANT	TURKISH	X	X	X	INDUSTRIAL PLANT	3450	2007
14	BMAG	BMAG - POLY-DIAL INJECTION PLANT	SKANDERUN	X	X	X	INDUSTRIAL PLANT	3400	2007
15	METRO	UNIFWAY - METRO SHOPPING CENTER	ISTANBUL	X	X	X	SHOPPING & TRADE CENTER	2800	2007
16	YIFE	YIFE POLICE SHOPPING CENTER	AFGHAN	X	X	X	SHOPPING & TRADE CENTER	1.700	2007
17	TSO	TSO - BELSARIN METAL FAB PLANT	KUWAIT	X	X	X	INDUSTRIAL PLANT	1.700	2007
18	BMAG	BMAG - ISOMER BULK STRUCTURE	SKANDERUN	X	X	X	INDUSTRIAL PLANT	660	2007
19	TR	TR - AVSAR KASAP - REFINERY HEATERS	SALDUSKIA	X	X	X	INDUSTRIAL PLANT	275	2007
20	ALTYALDIZ	ALTYALDIZ AIRPORT TRAINS	TR	X	X	X	STEEL CONST. BUILDING	260	2007
21	ALBIR - ALARIC	ALARIC - KIRKALE COMPRESSOR	KIRKALE	X	X	X	INDUSTRIAL PLANT	240	2007
22	ALBIR - ALARIC	ALARIC - KIRKALE LIGNIFICATION	KIRKALE	X	X	X	INDUSTRIAL PLANT	160	2007
23	UNIFWAY - STANUL YAP	UNIFWAY - STANUL YAP BRIDGE	ISTANBUL	X	X	X	BRIDGE	155	2007
24	ODAMR	ODAMR - CRANE MANUFACTURING	ISTANBUL	X	X	X	STRUCTURAL STEEL CONST.	110	2007
25	ALBIR - ALARIC	ALARIC - ZET - COIL UNIT	KOCALI	X	X	X	INDUSTRIAL PLANT	890	2006
26	ALBIR - ALARIC	ALARIC - TEPRA KIRKALE COX	KIRKALE	X	X	X	INDUSTRIAL PLANT	1.850	2006
27	YAYINCI SERKES	YAYINCI SERKES - S.S (DIPNANT) VACUUM BLANK	ISTANBUL	X	X	X	BRIDGE	1.460	2006
28	BMAG	BMAG - SLAB	SKANDERUN	X	X	X	INDUSTRIAL PLANT	1.300	2006
29	FOKISTONE	FOKISTONE - BRICK	TURKISH	X	X	X	INDUSTRIAL PLANT	1.100	2006
30	AKOGLU METAL	AKOGLU METAL - STORAGE BUILDING	KOCALI	X	X	X	INDUSTRIAL PLANT	660	2006
31	TS	TS - KIRKALE	KIRKALE	X	X	X	INDUSTRIAL PLANT	600	2006
32	PNBA 200	PNBA 200 SHOPPING CENTER	SHARJAH	X	X	X	STEEL CONST. BUILDING	400	2006
33	QETIN METAL	PLATE PROCESSING PLANT	KOCALI	X	X	X	INDUSTRIAL PLANT	300	2006
34	AKOGLU ALUMINUM	AKOGLU ALUMINUM	GEORGIA	X	X	X	STEEL CONST. BUILDING	275	2006
35	SAVIT	INDUSTRIAL FIBERGLASS	INDONESIA	X	X	X	INDUSTRIAL PLANT	280	2006
36	YAYINCI SERKES	S.S ZET (TR) METRO VACUUM BLANK	ISTANBUL	X	X	X	BRIDGE	1.100	2005
37	SETANK	IRON STEEL DEPT (3) BUILDING	KOCALI	X	X	X	INDUSTRIAL PLANT	1.000	2005
38	SHAKH	SHAKH - METRO	ISTANBUL	X	X	X	STEEL CONST. BUILDING	840	2005
39	DAL TEKNIK	DAL - PAKISTAN	PAKISTAN	X	X	X	INDUSTRIAL PLANT	660	2005
40	NTM	TELECO	SAUDI	X	X	X	INDUSTRIAL PLANT	300	2005
41	ANTIKONTEL	ANTIKONTEL - FACTORY	QATAR	X	X	X	STEEL CONST. BUILDING	300	2005
42	NTM	HANSA - TURKISH	KOCALI	X	X	X	INDUSTRIAL PLANT	200	2005
43	TEZCAN	GALVANIZING PLATE AND ROLLING MILLS	KOCALI	X	X	X	INDUSTRIAL PLANT	8.500	2004

NO	EMPLOYER	TITLE OF WORK	LOCATION	DESIGN BRIDGE TYPE	CONSTRUCTION METHOD	TYPE OF WORK	TONNAGE	YEAR
44	DAL TEKNIK	PAKISTAN - PAKISTAN CEMENT FACTORY	PAKISTAN	X	X	INDUSTRIAL PLANT	1.200	2004
45	ALBIR - ALARIC	ALARIC - ALARIC - ALARIC POWER PLANT	ALGERIA	X	X	INDUSTRIAL PLANT	1.100	2004
46	AK NEJAT	AK NEJAT	ISTANBUL	X	X	INDUSTRIAL PLANT	940	2004
47	KUTAY	KUTAY GLASSWORK	ISTANBUL	X	X	INDUSTRIAL PLANT	840	2004
48	DFCA	FORMULA	ISTANBUL	X	X	STEEL CONST. BUILDING	750	2004
49	NTM	TOYOTA - ISHIO	SAUDI	X	X	INDUSTRIAL PLANT	600	2004
50	ZORLU	ZORLU - WATSON NATURAL GAS PLANT	KAZAKH	X	X	INDUSTRIAL PLANT	550	2004
51	ENTEX	AFGHANISTAN - VACUUM BLANK	AFGHANISTAN	X	X	STEEL CONST. BUILDING	375	2004
52	BMAG	BMAG - PROCESSING CENTER	ISTANBUL	X	X	STEEL CONST. BUILDING	320	2004
53	BIG	BALAT HOSPITAL	ISTANBUL	X	X	STEEL CONST. BUILDING	300	2004
54	AKSA	AKSA - CYPRUS POWER PLANT	CYPRUS	X	X	INDUSTRIAL PLANT	180	2004
55	DADWA	NEW PRODUCTION AND STORAGE FACILITY	SAUDI	X	X	INDUSTRIAL PLANT	1360	2003
56	SA	CARREFOUR - SAUDI	ISTANBUL	X	X	STEEL CONST. BUILDING	2.100	2003
57	GENE	ACADEMY UNIVERSITY FACULTY OF MEDICINE HOSPITAL	KOCALI	X	X	STEEL CONST. BUILDING	1.500	2003
58	DAL TEKNIK	SLAB COKE FACTORY	SLAB	X	X	INDUSTRIAL PLANT	1.270	2003
59	ALFA	ALFA - FACTORY BUILDING	KOCALI	X	X	INDUSTRIAL PLANT	770	2003
60	TATIM	TATIM	RUSSIA	X	X	INDUSTRIAL PLANT	400	2003
61	EBRA	EBRA	KOCALI	X	X	INDUSTRIAL PLANT	480	2003
62	DATA	DATA FACTORY BUILDING	ISTANBUL	X	X	INDUSTRIAL PLANT	480	2003
63	ITU	ITU - OPEN SOURCE RESEARCH INSTITUTE	ISTANBUL	X	X	STEEL CONST. BUILDING	470	2003
64	KORCOZ	KORCOZ PACKAGING FACTORY	ISTANBUL	X	X	INDUSTRIAL PLANT	470	2003
65	DELTA	DELTA - FACTORY BUILDING	KOCALI	X	X	INDUSTRIAL PLANT	420	2003
66	FEDRAL MOGLU	FEDRAL MOGLU - TOLA FACTORY	KOCALI	X	X	INDUSTRIAL PLANT	360	2003
67	SAVIT	SAVIT - HORIZONTAL STORAGE	INDONESIA	X	X	INDUSTRIAL PLANT	280	2003
68	ETA	ONAFONSA - MOGLU	ISTANBUL	X	X	STEEL CONST. BUILDING	260	2003
69	BAHRA EL BLEM	PRODUCTION FACILITIES	ISTANBUL	X	X	INDUSTRIAL PLANT	240	2003
70	AKOGLU	AKOGLU - FACTORY BUILDING	ISTANBUL	X	X	INDUSTRIAL PLANT	230	2003
71	AK	AK - HONG KONG BRIDGES - BRIDGE	ISTANBUL	X	X	STEEL CONST. BUILDING	200	2003
72	NTM	TOYOTA - NTM	ISTANBUL	X	X	INDUSTRIAL PLANT	140	2003
73	NTM	PERMUTER - NTM	RUSSIA	X	X	STEEL CONST. BUILDING	130	2003
74	EBRA	EBRA - METRO	ISTANBUL	X	X	INDUSTRIAL PLANT	210	2003
75	QUEBEC	QUEBEC - RUBBER BUILDING	ISTANBUL	X	X	STEEL CONST. BUILDING	210	2003
76	NTM	QUEBEC - RUBBER - NTM	SAUDI	X	X	STEEL CONST. BUILDING	200	2003
77	ROYAL	TURKISH - ROYAL - ROYAL COKE	TURKISH	X	X	STEEL CONST. BUILDING	170	2003
78	AK NEJAT	FORD TRUCK PLANT AND PHE BRIDGES	KOCALI	X	X	INDUSTRIAL PLANT	2.580	2002
79	EBRA	HYUNDAI - PRES HILL	KOCALI	X	X	INDUSTRIAL PLANT	1.200	2002
80	FEDRAL MOGLU	FEDRAL MOGLU - ZET FACTORY	KOCALI	X	X	INDUSTRIAL PLANT	900	2002
81	AKSA	AKSA - TEXTILE FACTORY	KIRKALE	X	X	INDUSTRIAL PLANT	660	2002
82	STANDART	STANDART - GOLF INDUSTRY - FACTORY BUILDING	KOCALI	X	X	INDUSTRIAL PLANT	550	2002
83	AK NEJAT	FORD PRES HILL	KOCALI	X	X	INDUSTRIAL PLANT	450	2002
84	EBRA	EBRA - BAHAMAS	ISTANBUL	X	X	SHOPPING & TRADE CENTER	400	2002
85	ISTEN YAP	ISTEN YAP - PHEM ACHEMICAL PLANT	TR	X	X	INDUSTRIAL PLANT	350	2002
86	AK NEJAT	FORD PRES HILL BRIDGE	KOCALI	X	X	INDUSTRIAL PLANT	300	2002
87	MECA PLAST	MECA PLAST	ISTANBUL	X	X	INDUSTRIAL PLANT	280	2002
88	BERPOLU	BERPOLU TEXTILE FACTORY BUILDING	QATAR	X	X	INDUSTRIAL PLANT	240	2002

MODÜL ÇELİK YAPI VE PETROL SANAYİ TİCARET LİMİTED ŞİRKETİ

Tüpraş Dolum Tesisleri Mevkii Güney Mah. Nizam Sk. No. 13 41780 Körfez / Kocaeli - Turkey
Tel: 90 262 527 75 62 • Fax: 90 262 527 16 35

Office: Sedef Cad. Ata-2/3 Blok Kat: 7 D. 64 34710 Ataşehir / İstanbul - Turkey
Tel: 90 216 456 76 86 • Fax: 90 216 456 76 90

modul@modulcelik.com.tr • www.modulcelik.com.tr